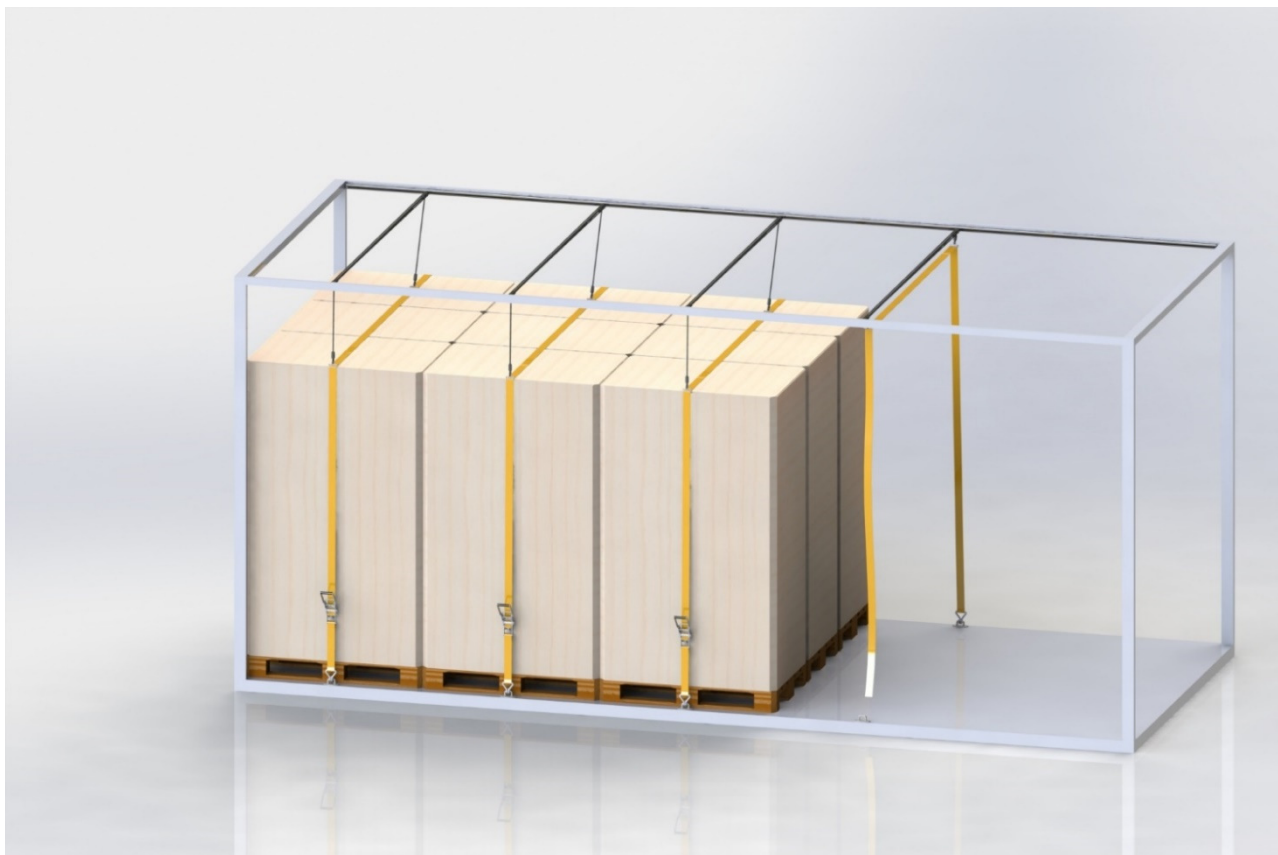
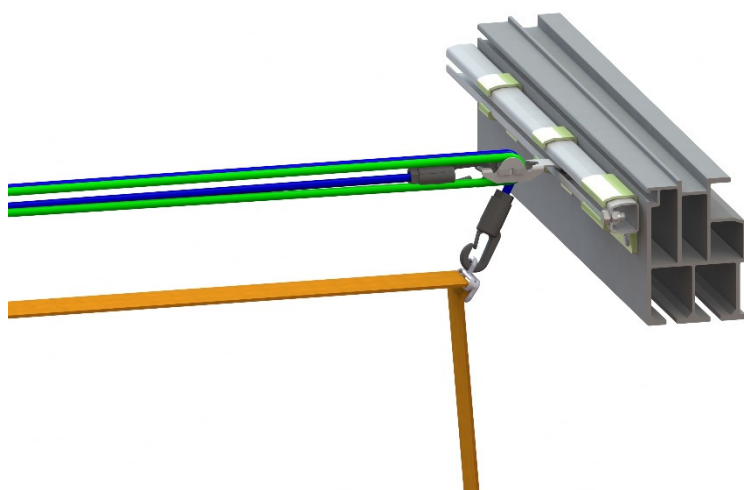


FIX Strap® – innovative solution to use normal straps.



FIX Strap® is an ordinary lashing strap including the strap, the ratchet short end and FIX Suspension System parts to make it more versatile and easier to use than normal loose straps.

FIX Strap® parts are: a patented bungee suspension system, which lifts the strap up to the roof while not in use, and the parts needed to attach the bungees to the strap. Tracks are mounted in the trailer and roller bearing carts move easily along it.



Bungee cords run through the carts and allow the bungees to be pulled the whole way down to trailer floor, but maintain enough force to pull it up to the roof when released.

The height requirement of the FIX suspension system is only 30mm and length of the cart is 50mm. When pushed together to one end of the trailer the length requirement is only 60cm for 12 straps. This is less than the opened roof will take.



NWE Network Engineering Oy
Uppstutaget 2
FI-64200 Närpes, Finland
www.nwe.fi, www.fixroad.fi
info@nwe.fi

The strap is mounted through FIX Slide, this innovative solution provides both functions needed for FIX Strap® use.



On the hook side it works like a 3-bar slide where the position can be changed, but the strap will not move with bungee force. This gives the advantage that there is no risk that the hook gets loose from the floor ring while the strap is placed and tightened correctly over the load. The hook will stay connected to the floor ring with the bungee force.



On the ratchet side it slides freely on the strap.

Different ratchet options are available. The ratchet can also be made captive to the strap. A long handle ERGO ratchet can also be suspended from the roller cart.



Standard ratchet



Long handle ERGO ratchet



Suspended long handle ERGO ratchet

Roller carts are moving along the track with roller bearings and there is a choice of fixed mounting of the carts.

Choices are:

1. Length of strap. Calculation of length $2 \times \text{cargo space height} + \text{width} - \text{ratchet length}$ (usually 0,5m).
Example: suitable strap length for 2,7m high and 2,45m wide cargo space is about 7,3-7,5m.
2. Type of ratchet: standard, long handle or suspended long handle ratchet.
3. Number of straps: full long 13,6m trailer usually have 12 or 13 straps.
4. Type of movability: fixed carts or track mounting.
5. In case of track mounting, length of track. Usually trailer inside length – 10cm for cart assembly.
6. In case of track mounting, type of brackets. Mounting on cantrail (vertical) or roof (horizontal surface).