



NETWORK ENGINEERING OY AB

# FIX

CARGO SECURING



**Product catalog 2021**

## Table of Contents

<b>About NWE</b>	<b>Page 3</b>
<b>FIX Strap</b>	<b>Page 4</b>
<b>FIX Road</b>	<b>Page 7</b>
<b>FIX Special products</b>	<b>Page 13</b>
<b>About FIX Cargo Securing</b>	<b>Page 15</b>
<b>FIX Marine</b>	<b>Page 16</b>
<b>FIX Truck-safe</b>	<b>Page 18</b>
<b>FIX Solutions</b>	<b>Page 20</b>
<b>Spare parts &amp; accessories</b>	<b>Page 21</b>





## NWE NETWORK ENGINEERING OY AB

1994 Mats Rönnskog founded NWE Network Engineering AB OY

Head office and production in Närpes, Finland

2008 NWE took over the production of FIX Cargo Securing

## FIX CARGO SECURING

We give our customers comprehensive service and leave nothing to chance. The customer can always be sure that the investment in FIX is profitable, thanks to the repayment forecasts we make. We also have the competence to do load securing calculations for different loads and transport routes. There is no doubt that we have the most satisfied customers in the market.

We manufacture our own patented FIX products and associated suspension systems that meet all applicable cargo securing requirements for road and sea transport globally. With our load securing systems, the customer saves time and safety is increased for both cargo and driver. The environment is also important to us and we are pleased that our FIX products help to reduce waste. When using our load securing cloth, for example, the need to use corner protectors, which are often disposable, disappears. In addition, our products are durable due to the high quality materials we use, so the securing equipment does not need to be renewed as often as traditional equipment. These benefits explain the ever-increasing demand for our products and have made us what we are - an important player and partner in the transport industry, both nationally and globally.





8 laster i luckan ger en återbetalningstid på 5 veckor

höglig och låg kostnad

Uppfyller EUs lastsäkerhetskrav



**Complete movable FIX Strap system with 7 cargo securing straps. For 6-8m trailers**

Includes, 6x2400mm C-tracks, 1x1000 C-track,  
18 X Bracket 40, 10 x Joining/end bracket 80  
7 x FIX bungee roller suspension units  
7 x FIX 9,6m+0,4, 50mm ratchet straps complete with slide adjusters & claw hooks.

FIX Strap system 7 **without** straps, ratchet and FIX slide.

**Part number: 140100107**

*(The length of the straps is adapted to the inner height of the trailer)*

**Part number: 130100107**



**Complete movable FIX Strap system med 13 cargo securing straps. For 12,5-14m trailers**

Includes, 10x2400mm C-tracks, 2x1500 C-track,  
32 X Bracket 40, 14 x Joining/end bracket 80  
13 x FIX bungee roller suspension units  
13 x FIX 9,6+0,4m, 50mm ratchet straps complete with slide adjusters & claw hooks.

FIX Strap system 13 **without** straps, ratchet and FIX Slide.

**Part number: 140100113**

*(The length of the straps is adapted to the inner height of the trailer)*

**Part number: 130100113**



**FIX suspension units movable 8mm**

FIX sliding bungee roller carriage suspension units

**Part number: 1300001**



**Cargo securing straps complete with ratchet and FIX Slide**

FIX Strap 50mm x 9,6m+0.4m Red webbing ratchet lashing units EN 12195-2 LC 2500 daN C/w FIX Slide adjuster system

SHF 50 daN, STF 300 daN

**Part number: 104101409**



**FIX Ratchet 0,4**

0.4m ratchet tensioner ends with wire J hook d16mm

50mm

SHF 50 daN, STF 300 daN

LC 2500 daN

**Part number: 1291014**



**Bracket 40**  
Bracket for C-track 40mm

**Part number: 1391001**



**Join/end bracket 80**  
Join/end bracket for C-track 80mm

**Part number: 1391002**



**C-track 1000mm**  
C-profil for FIX suspension system 1000mm  
**C-track 1500mm**  
C-profil for FIX suspension system 1500mm  
**C-track 2400mm**  
C-profil for FIX suspension system 2400mm

**Part number: 1392005**

**Part number: 1392006**

**Part number: 1392024**



**FIX Slide**  
FIX Slide to connect the strap with the suspension system

**Part number: 1448001**



**End stop screw C-track**  
End stop Screw for the c-track

**Part number: 1392045**



**Complete FIX Strap system with 7 cargo securing straps and fixed suspension units, For 6-8m trailers** Includes 7 x FIX Fixed suspension unit 8mm, 7 x FIX 50mm x 9,6m+0,4m Cargo securing straps complete with ratchet and FIX Slide.

**Part number: 104100207**

**Complete FIX Strap system with 13 cargo securing straps and fixed suspension units, For 12,5-14m trailers** Includes 13 x FIX Fixed suspension unit 8mm, 13 x FIX 50mm x 9,6m+0,4m Cargo securing straps complete with ratchet and FIX Slide.

**Part number: 104100213**

*(The length of the straps is adapted to the inner height of the trailer)*



**Loose screwhook**

Loose screwhook to FIX Bungee cord 8mm

**Part number: 1392002**

**Socket for hook assembly**

A special socket for easier assembly of the screwhook (1392002)

**Part number: 1991010**

Compatible with a power tool. See page 12



**Repair kit FIX Bungee cord 8mm**

1391009 FIX Bungee cord + one mounted 1392002 screwhook and one loose.

**Part number: 1391009**



**FIX Ratchet 0,33**

Ratchet with hook d16mm L 0,33m  
50mm  
SHF 50 daN, STF 300daN  
LC 2500 daN

**Part number: 1291102**



**FIX Ratchet with hook 0,18**

Hook with lock  
50mm  
SHF 50 daN, STF 300 daN  
LC 25 kN

**Part number: 1291077**



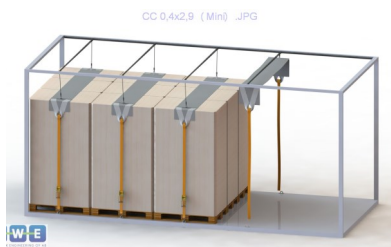
### FIX Mini 0,4 7 System

Complete FIX Mini system for 7-8 m trailer.

Part number: 101103007

Includes 7 X FIX Mini 40cm wide x 2.8m cargo securing tarpaulin units, 14 X 0.4m x 50mm ratchet tensioner ends, 7 X FIX sliding bungee roller carriage suspension units, 6 X 2,400mm FIX Track 'C' section suspension tracks, 1 X 1,000mm FIX Track 'C' section suspension tracks, 18 X F40 mounting brackets, 10 X F80 joining and end brackets.

*(The length of the straps is adapted to the inner height of the trailer)*



### FIX Mini 0,4 13 System

Complete FIX Mini system for 13.6 m trailer.

Part number: 101103013

Includes 13 X FIX Mini 40cm wide x 2.8m cargo securing tarpaulin units, 26 X 0.4m x 50mm ratchet tensioner ends, 13 X FIX sliding bungee roller carriage suspension units, 10 X 2,400mm FIX Track 'C' section suspension tracks, 2 X 1,500mm FIX Track 'C' section suspension tracks, 32 X F40 mounting brackets, 14 X F80 joining and end brackets.

*(The length of the straps is adapted to the inner height of the trailer)*



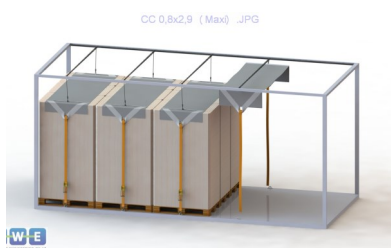
### FIX Maxi 0,8 7 System

Complete FIX Maxi system for 7-8 m trailer.

Part number: 101108007

Includes 7 X FIX Maxi 80cm wide x 2.8m cargo securing tarpaulin units, 14 X 0.4m x 50mm ratchet tensioner ends, 7 X FIX sliding bungee roller carriage suspension units, 6 X 2,400mm FIX Track 'C' section suspension tracks, 1 X 1,000mm FIX Track 'C' section suspension tracks, 18 X F40 mounting brackets, 10 X F80 joining and end brackets.

*(The length of the straps is adapted to the inner height of the trailer)*



### FIX Maxi 0,8 13 System

Complete FIX Maxi system for 13.6 m trailer.

Part number: 101108013

Includes 13 X FIX Maxi 80cm wide x 2.8m cargo securing tarpaulin units, 26 X 0.4m x 50mm ratchet tensioner ends, 13 X FIX sliding bungee roller carriage suspension units, 10 X 2,400mm FIX Track 'C' section suspension tracks, 2 X 1,500mm FIX Track 'C' section suspension tracks, 32 X F40 mounting brackets, 14 X F80 joining and end brackets.

*(The length of the straps is adapted to the inner height of the trailer)*



### FIX Mini 40cm Wide

Part number: 1011000

### FIX Maxi 80cm Wide

Part number: 1011080

FIX Maxi 40/80cm wide x 2.8m cargo securing tarpaulin units EN 12195-2 LC 2500 daN

*(The length of the straps is adapted to the inner height of the trailer)*



**FIX Ratchet 0,4**

0.4m ratchet tensioner ends with Wire J hook d16mm  
50mm  
SHF 50 daN, STF 300 daN  
LC 2500 daN

**Part number: 1291014**



**FIX Adjustable short end**

FIX adjustable short end.  
50mm  
LC 2500 daN

**Part number: 1411100**



**Bracket 40**

Bracket for C-track 40mm

**Part number: 1391001**



**Join/end bracket 80**

Join/end bracket for C-track 80mm

**Part number: 1391002**



**C-track 1000mm**

C-profil for FIX suspension system 1000mm

**Part number: 1392005**

**C-track 1500mm**

C-profil for FIX suspension system 1500mm

**Part number: 1392006**

**C-track 2400mm**

C-profil for FIX suspension system 2400mm

**Part number: 1392024**





**FIX suspension units movable 8mm**  
FIX sliding bungee roller carriage suspension units

**Part number: 1300001**



**Repair kit FIX Bungee cord 8mm**  
1391009 FIX Bungee cord + one mounted 1392002 screwhook  
and one loose.

**Part number: 1391009**



**Loose screwhook**  
Loose screwhook to FIX Bungee cord 8mm

**Part number: 1392002**



**Socket for hook assembly**  
A special socket for easier assembly of the screwhook  
(1392002)

**Part number: 1991010**



**End stop screw C-track**  
End stop Screw for the c-track

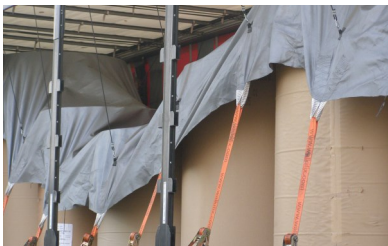
**Part number: 1392045**



### FIX ROAD 8,2x2,9 System

**Part number: 1011007082**

Complete FIX ROAD system for 7-8 m trailer  
 1 X FIX Road 8,2x2,9 Cargo Securing tarpaulin units acc. to EN 12195-2 LC 2,500 daN 2 x 7 Lashing straps length 2,5m,  
 14 X 0.4m x 50mm ratchet tensioner ends, 7 X FIX sliding Bungee Roller carriage suspension units, 6 X 2,400mm FIX Track 'C' section suspension tracks, 1 X 1,000mm FIX Track 'C' section suspension tracks, 18 X F40 mounting brackets, 10 X F80 joining and end brackets.  
*(The length of the straps is adapted to the inner height of the trailer)*



### FIX ROAD 14,7x2,9 System

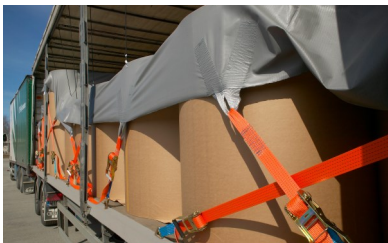
**Part number: 1011012147**

Complete FIX ROAD system for 13.6 m trailer  
 1 X FIX Road 14,7x2,9 Cargo Securing tarpaulin units acc. to EN 12195-2 LC 2,500 daN 2 x 12 Lashing straps length 2,5m,  
 24 X 0.4m x 50mm ratchet tensioner ends, 12 X FIX sliding Bungee Roller carriage suspension units, 10 X 2,400mm FIX Track 'C' section suspension tracks, 2 X 1,500mm FIX Track 'C' section suspension tracks, 32 X F40 mounting brackets, 14 X F80 joining and end brackets.  
*(The length of the straps is adapted to the inner height of the trailer)*



- FIX Road 1,7m X 2,9m Cargo Securing tarpaulin unit
- FIX Road 3,0m X 2,9m Cargo Securing tarpaulin unit
- FIX Road 4,3m X 2,9m Cargo Securing tarpaulin unit
- FIX Road 5,6m X 2,9m Cargo Securing tarpaulin unit
- FIX Road 6,9m X 2,9m Cargo Securing tarpaulin unit
- FIX Road 8,2m X 2,9m Cargo Securing tarpaulin unit
- FIX Road 9,5m X 2,9m Cargo Securing tarpaulin unit
- FIX Road 10,8m X 2,9m Cargo Securing tarpaulin unit

- Part number: 1011002**
- Part number: 1011003**
- Part number: 1011004**
- Part number: 1011005**
- Part number: 1011006**
- Part number: 1011007**
- Part number: 1011008**
- Part number: 1011009**



- FIX Road 12,1m X 2,9m Cargo Securing tarpaulin unit
- FIX Road 13,4m X 2,9m Cargo Securing tarpaulin unit
- FIX Road 14,7m X 2,9m Cargo Securing tarpaulin unit
- FIX Road 16,0m X 2,9m Cargo Securing tarpaulin unit
- FIX Road 17,3m X 2,9m Cargo Securing tarpaulin unit
- FIX Road Cargo Securing tarpaulin unit acc. EN 12195-2 LC 2500 daN

- Part number: 1011010**
- Part number: 1011011**
- Part number: 1011012**
- Part number: 1011013**
- Part number: 1011014**

*(The length of the straps is adapted to the inner height of the trailer)*



### FIX Ratchet 0,4

**Part number: 1291014**

0.4m ratchet tensioner ends with wire J hook d16mm  
 50mm  
 SHF 50 daN, STF 300 daN  
 LC 2500 daN



**FIX adjustable short end**  
 FIX adjustable short end.  
 LC 2500 daN  
 50mm

**Part number: 1411100**



**Bracket 40**  
 Bracket for C-track 40mm

**Part number: 1391001**



**Join/end bracket 80**  
 Join/end bracket for C-track 80mm

**Part number: 1391002**



**C-track 1000mm**  
 C-profil for FIX suspension system 1000mm  
**C-track 1500mm**  
 C-profil for FIX suspension system 1500mm  
**C-track 2400mm**  
 C-profil for FIX suspension system 2400mm

**Part number: 1392005**

**Part number: 1392006**

**Part number: 1392024**



**FIX suspension units movable 8mm**  
 FIX sliding bungee roller carriage suspension units

**Part number: 1300001**



**Repair kit FIX Bungee cord 8mm**

1391009 FIX Bungee cord + one mounted 1392002 screwhook and one loose.

**Part number: 1391009**



**Loose screwhook**

Loose screwhook to FIX Bungee cord 8mm

**Part number: 1392002**



**Socket for hook assembly**

A special socket for easier assembly of the screwhook (1392002)

**Part number: 1991010**



**End stop Screw C-track**

End stop screw for the c-track

**Part number: 1392045**



**FIX Ratchet 0,33**

Ratchet with hook d16mm L 0,33m  
50mm  
SHF 50 daN, STF 300daN  
LC 2500 daN

**Part number: 1291102**



**FIX Timber complete system securing cargo that is not close to front bulkhead.**

**Part number: 108112700**

FIX Timber, is a further development from FIX Road Cargo Securing System to secure sawtimber and other heavy and high load from sliding or tipping forward. Sometimes it is necessary to load the cargo with some distance to the front bulkhead due to weight distribution.

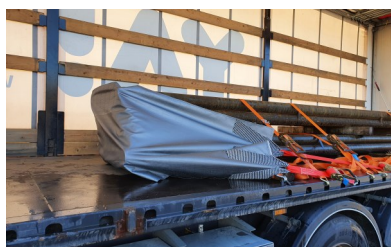
**Includes:** 4 X 1000mm C-track, 6 X Join/end bracket 80mm, 4 X bracket 40mm, 4 X setscrew for c-track, 6 FIX ratchet LC 2500 daN, 1 X 8mm FIX movable suspension unit, 1 X 10mm FIX movable suspension unit.



**FIX Timber cargo securing tarpaulin unit**

**Part number: 1081127**

Only FIX timber cargo securing tarpaulin unit **without** suspension units, ratchets and tracks.



**FIX Steel Cargo securing for the transport of heavy materials**

Storlek: **Part number:**  
 0,9m X 2,9m **1081202**  
 1,3m X 2,9m **1081203**  
 1,7m X 2,9m **1081204**

Heavy material that due to weight or weight distribution is loaded in low units, bundles or packages, which are not placed in close proximity to the front bulkhead, should be secured with straight lashings to avoid forward movement at e.g. braking. In order for these to be safely transported, NWE Network Engineering Ab has developed a special version of FIX Road load securing tarpaulin. The tablecloth in picture (0.9x2.9m) has 2 lashes per side to be tightened around one end of the load. Load securing capacity for the whole is LC 100 kN (10 tonnes) and the breaking strength over 20 tonnes.



**FIX Beam**

**Part number: 1300200**

**FIX Beam is ideal for DIY retrofit applications and offers a quick and easy 'in-trailer' DIY self-install conversion from snap buckle / 'A' \ strap systems.**

A sliding beam carriage unit with an integral FIX Bungee lashing suspension system that can be installed to \*pre-existing Henderson type tracks to provide for the use of correct top-over frictional lashing systems that are tested, manufactured and used in accordance with EN Standard - Load restraint assemblies on road vehicles EN 12195-1 - Part 1 calculation of lashing forces and EN 12195 -2 Part 2: Web lashing made from man-made fibres.



**FIX Agri**

**Cargo lashing for agricultural loads**

FIX Agri is a further development of the FIX Road cargo lashing system, adapted for the transport of hay, manure and other things the farms need. FIX Agri is an approved lashing tool for transport on public roads and is especially suitable for hay bales, large bags and pallet goods that are run on open surfaces without sides.

Size:	Part number:
6,9m X 2,9m	<b>1081056</b>
8,2m X 2,9m	<b>1081057</b>
9,5m X 2,9m	<b>1081058</b>
10,8m X 2,9m	<b>1081059</b>
12,1m X 2,9m	<b>1081060</b>



**D-ring**  
50mm  
LC 25kN

**Part number: 1392043**



**Hook 50mm Tube hook with lock**  
50mm tube hook with a locking, internal diameter pipe 17,5mm

**Part number: 1292016**



**Adjustable strap lock**  
50mm  
LC 25kN

**Part number: 1292013**



**FIX Ratchet 0,4**  
0.4m ratchet tensioner ends with wire J hook d16mm  
50mm  
SHF 50 daN, STF 300 daN  
LC 2500 daN

**Part number: 1291014**

## FIX Products Fast & Easy Cargo Securing

### FIX Strap®

- ▶ With FIX Strap, securing straps are hung up on the ceiling of the cargo space, where they are kept clean and ready for loading.
- ▶ The driver does not need to climb up onto the cargo, throw straps over it and risk getting injured.
- ▶ The system saves time in both loading and unloading and improves work safety.

### FIX Road®

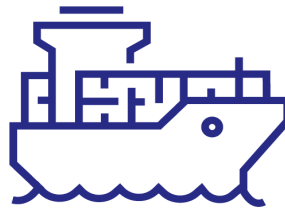
- ▶ FIX Road consists of our patented suspension system and a durable, cargo-securing cover with sewed-in securing straps in both sides
- ▶ FIX Road protects loads and holds them together under all conditions. The system makes both loading and unloading physically easier and safer.
- ▶ Suits cargoes of different shapes
- ▶ Durable, last for years
- ▶ Light
- ▶ 2500 daN for each anchor point

### FIX Cargo Securing®

- ▶ Based on our patented suspension-system
- ▶ Easy to install
- ▶ Tested according to EN 12195-2
- ▶ Meets National and EU regulations
- ▶ Dekra approved
- ▶ For the FIX Road and FIX Marine products we use a woven fabric specially made for us using chemically resistant polypropylene fibers

### FIX Truck-Safe®

- ▶ Fast and easy
- ▶ Tightening the lashings to the desired tension takes between a few seconds and a minute
- ▶ Truck-Safe® also monitors the tension level and automatically re-tightens the securing straps when needed, e.g. if the cargo collapses
- ▶ Automation does the job for you
- ▶ Perfect for shuttle transports
- ▶ Maximum time-save



**FIX RORO 13,4x3,4 System**

13 FIX Marine system for 40´ Mafi-rolltrailer or RoRo-cassette

FIX RORO 13,4 x 3,4m cargo securing tarpaulin units

EN 12195-2 LC 2,500 daN

Lashing strap length acc. to request

**Artikelnr: 1021011**



**FIX STOW 13,4x3,4 System**

13 FIX Marine system in the hold of the ship.

FIX STOW 13,4 x 3,4m cargo securing tarpaulin units

EN 12195-2 LC 2,500 daN

Lashing strap length acc. to request

**Artikelnr: 1021111**



**FIX MARINE weather protection**

FIX Marine can be adapted with weather protection to protect the load in the best way.

**Artikelnr: 1291075**



**Hook**

Casted 50mm

MBL

**Artikelnr: 1292008**



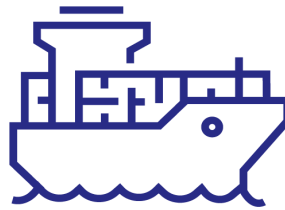
**Hook**

50mm D32mm

LC 25 kN

**Artikelnr: 1292003**





**Reserve strap**  
50mm  
LC 2500 daN

Artikelnr: 1491101



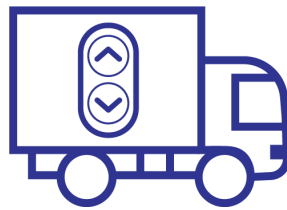
**Short end with D-ring**  
50mm  
LC 2500 daN

Artikelnr: 1411103



**FIX ratchet 0,4 with d32mm J hook**  
0.4m Ratchet tensioner ends with wire J hook d32mm  
50mm  
SHF 50 daN, STF 300 daN  
LC 2500 daN

Artikelnr: 1291075



**FIX Truck-safe for side openable cabinet**

Automatic cargo securing system for trailers with side openable cabinets.

All FIX Truck-safe system are custom made for each order.



**FIX Truck-safe for lifting chapel**

Automatic cargo securing system for lifting chapel.

All FIX Truck-safe system are custom made for each order.



**FIX Truck-safe for cabinets with fixed walls**

Automatic cargo securing system for cabinets with fixed walls, Can get with or without transporting floor.

All FIX Truck-safe system are custom made for each order.



**FIX adjustable short end**

FIX adjustable short end.

50mm

LC 2500 daN

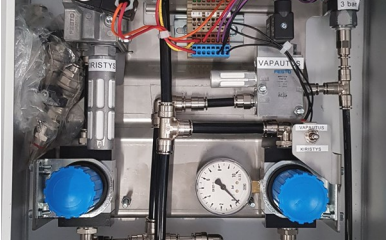
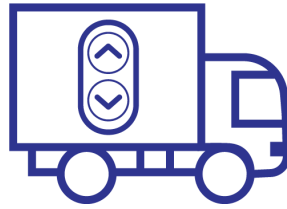
**Part number: 1411100**



**FIX suspension units movable 10mm**

FIX sliding Bungee roller carriage suspension units. 10mm with carabiner for FIX truck safe.

**Part number: 1300010**



**Control unit FIX Truck-safe**  
Control unit for Truck-safe.

**Part number: 2500001**



**Automatic tensioner**  
Automatic tensioner complete without bracket.

**Part number: 2590005**

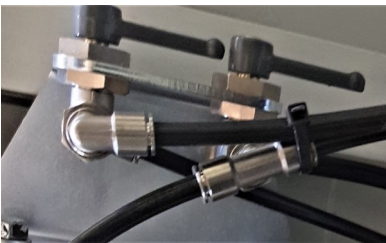


**Repair kit FIX Bungee cord 10mm**  
Rubbercord 10mm with 1X mounted carabiner,  
1X loose carabiner and 2X clamping rings.

**Part number: 1391011**

**Repair kit Bungeehook**  
1X carabiner och 2X clamping rings for 10mm FIX  
suspension units.

**Part number: 1392011**



**Service valve FIX Truck-safe**  
Service valve for trucksafe tensioner and locking cylinder.

**Part number: 2592012**



**Locking cylinder FIX Truck-safe**  
Locking cylinder for automatic tensioner.

**Part number: 2592015**



### FIX Check

A mechanical measuring tool for checking the approximate tension level.

**Part number: 1882001**

FIX Check gives an indication of the tension in the strap around the cargo. This measuring tool shows you approximately the amount of force that a strap has been pulled taut with. Since the tension level in a securing strap can vary up to 50% according to various factors, e.g. depending on the strap material, the arm strength of the person securing the cargo and the length of strap around the ratchet axle, it is important to check what the actual force is.



### FIX Measure

A unique electronic measuring instrument for quick and exact checking of the tension force in a taut cargo-securing strap.

**Part number: 1882003**

The accuracy of the measurement result is +/- 20 daN. The measuring instrument weighs only 1.7 kg with a battery (9V).



### The ultimate load securing calculator

One of Northern Europe's most recognized experts in load securing - Kimmo Weissenberg - helps you optimize your cargo fastening.

Download Kimmo's calculation model to find out instantly how to optimally secure your load. Modes of transport, volume, loading layout, and friction factors; this calculation takes it all into account. You won't find a more comprehensive tool.

Available for free download at [www.nwe.fi/en/](http://www.nwe.fi/en/)



### Loose screwhook

Loose screwhook to FIX Bungee cord 8mm

**Part number: 1392002**

### Socket for hook assembly

A special socket for easier assembly of the screwhook (1392002)

Compatible with a power tool. See page 12

Fits: FIX Strap, FIX Mini, FIX Maxi, FIX ROAD

**Part number: 1991010**



### Repair kit FIX Bungee cord 8mm

1391009 FIX Bungee cord + one mounted 1392002 screwhook and one loose.

**Part number: 1391009**

Fits: FIX Strap, FIX Mini, FIX Maxi, FIX ROAD



### Repair kit FIX Bungee Cord 10mm

Rubbercord 10mm with 1X mounted carabiner, 1X loose carabiner and 2X clamping rings.

**Part number: 1391011**

### Repair kit Bungeehook

1X carabiner och 2X clamping rings for 10mm FIX suspension units.

**Part number: 1392011**



### FIX suspension units movable 8mm

FIX sliding bungee roller carriage suspension unit 8mm

**Part number: 1300001**

Fits: FIX Strap, FIX Mini, FIX Maxi, FIX ROAD



### FIX suspension units movable 8mm for SCB Trailers

FIX sliding bungee roller carriage suspension units 4.0 meter for SCB Trailers

**Part number: 1300011**

Fits: FIX Strap, FIX Mini, FIX Maxi, FIX ROAD



**FIX bungee suspension fixed unit 8mm**  
FIX bungee for fixed mounting

**Part number: 1300020**



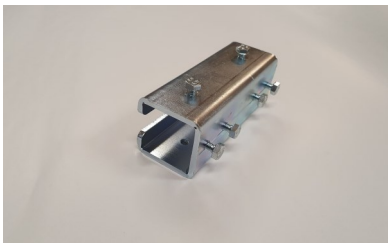
**Wall bracket**  
Wall bracket for FIX C-track

**Part number: 1392035**



**FIX C-bracket**  
FIX C-bracket for C-track

**Part number: 1392020**



**Joining profile**  
Joining profile for FIX C-track

**Part number: 1392028**



**Roof bracket**  
Roof bracket for FIX C-track

**Part number: 1392036**



**Hook with locking**  
Straphook with locking  
50mm  
LC 25kN

**Part number: 1292002**



**D-ring**  
50mm  
LC 25 kN

**Part number: 1392043**



**Hook**  
Strap hook  
50mm d16mm  
LC 25 kN

**Part number: 1292001**



**Adjustable Hook**  
Adjustable strap hook  
50mm  
LC 25 kN

**Part number: 1292007**



**Hook**  
Casted  
50mm  
MBL

**Part number: 1292008**



**Hook**  
Strap hook  
50mm D32mm  
LC 25 kN

**Part number: 1292003**



**Ekeri tension roller/dumbbell**  
Tension roller for Ekeri cargo securing system  
Also fits Bussbygg and Limetec  
Aluminium  
50mm  
LC 25 kN

**Part number: 1292081**



**Pipe hook**  
50mm  
LC 25 kN

**Part number: 1292006**



**Flat hook**  
50mm  
LC 25kN

Width: **Part number:**  
39mm **1292010**  
48mm **1292005**

**Flat hook**  
50mm  
LC 11kN

Width: **Part number:**  
35mm **1292038**



**D-ring**  
50mm  
LC 0,5kN  
6mm Ø

**Part number: 1392003**





**Adjustable strap lock**  
50mm  
LC 25kN

**Part number: 1292013**



**Cargo securing straps**

We produce 50mm lashing bands in the lengths and designs that are requested, in the colors orange, red and blue, more colors can be custom-ordered.



**Short end with D-ring**  
50mm  
LC 2500 daN

**Part number: 1411103**



**Reserve strap**  
50mm  
LC 2500 daN

**Part number: 1491101**



**FIX adjustable short end**  
FIX adjustable short end.  
50mm  
LC 2500 daN

**Part number: 1411100**



**FIX Ratchet with hook 0,18**

Hook with locking  
50mm  
SHF 50 daN, STF 300 daN  
LC 25 kN

**Part number: 1291077**



**FIX Ratchet 0,33**

Ratchet with hook d16mm L 0,33m

**Part number: 1291102**

**FIX Ratchet 0,4**

Ratchet with hook d16mm L 0,4m

**Part number: 1291014**

50mm, SHF 50 daN, STF 300daN, LC 2500 daN



**FIX ratchet 0,4 with d32mm J hook**

0.4m Ratchet tensioner ends with wire J hook d32mm  
50mm  
SHF 50 daN, STF 300 daN  
LC 2500 daN

**Part number: 1291075**



**Cargo securing straps LC 2500 daN**

With standard 0,4m ratchet and hooks  
50mm  
SHF 50 daN, STF 300 daN, LC 2500 daN  
Red, Orange and Blue

LC/Length: **Part number:**

LC 2500 7,6+0,4m: **104101117**

LC 2500 9,6+0,4m: **104101119**



**Cargo securing straps ERGO LC 2500 daN**

With 0,4m Ergo ratchet and hooks  
50mm  
SHF 50 daN, STF 500 daN, LC 2500 daN  
Red, Orange and Blue

LC/Length: **Part number:**

LC 2500 7,6+0,4m: **104101207**

LC 2500 9,6+0,4m: **104101209**



**Cargo securing straps LC 2000 daN**  
With standard 0,4m ratchet and hooks  
50mm  
SHF 50 daN, STF 300 daN, LC 2000 daN  
Yellow

LC/Length:            **Part number:**

LC 2000 7,6+0,4m: **104101107**  
LC 2000 9,6+0,4m: **104101109**



**Ratchet with short handle**  
Ratchet with short handle without strap  
50mm  
LC 10 kN

**Part number: 1292198**



**Ratchet with short handle**  
Ratchet with short handle without strap  
50mm  
LC 25 kN

**Part number: 1292199**



**FIX Ratchet**  
Standard ratchet without strap  
50mm,  
LC 25 kN

**Part number: 1292100**



**FIX Ergo ratchet**  
Ratchet with a long handle without strap  
50mm  
LC 25 kN

**Part number: 1292301**

**NWE**  
NETWORK ENGINEERING OY AB



# NWE

NETWORK ENGINEERING OY AB



# FIX

CARGO SECURING

PILLAR PARK



**NWE NETWORK ENGINEERING OY AB**

Uppstutåget 2

64200 Närpes

Finland

+358 622 50 114

[info@nwe.fi](mailto:info@nwe.fi)

[www.nwe.fi/en/](http://www.nwe.fi/en/)